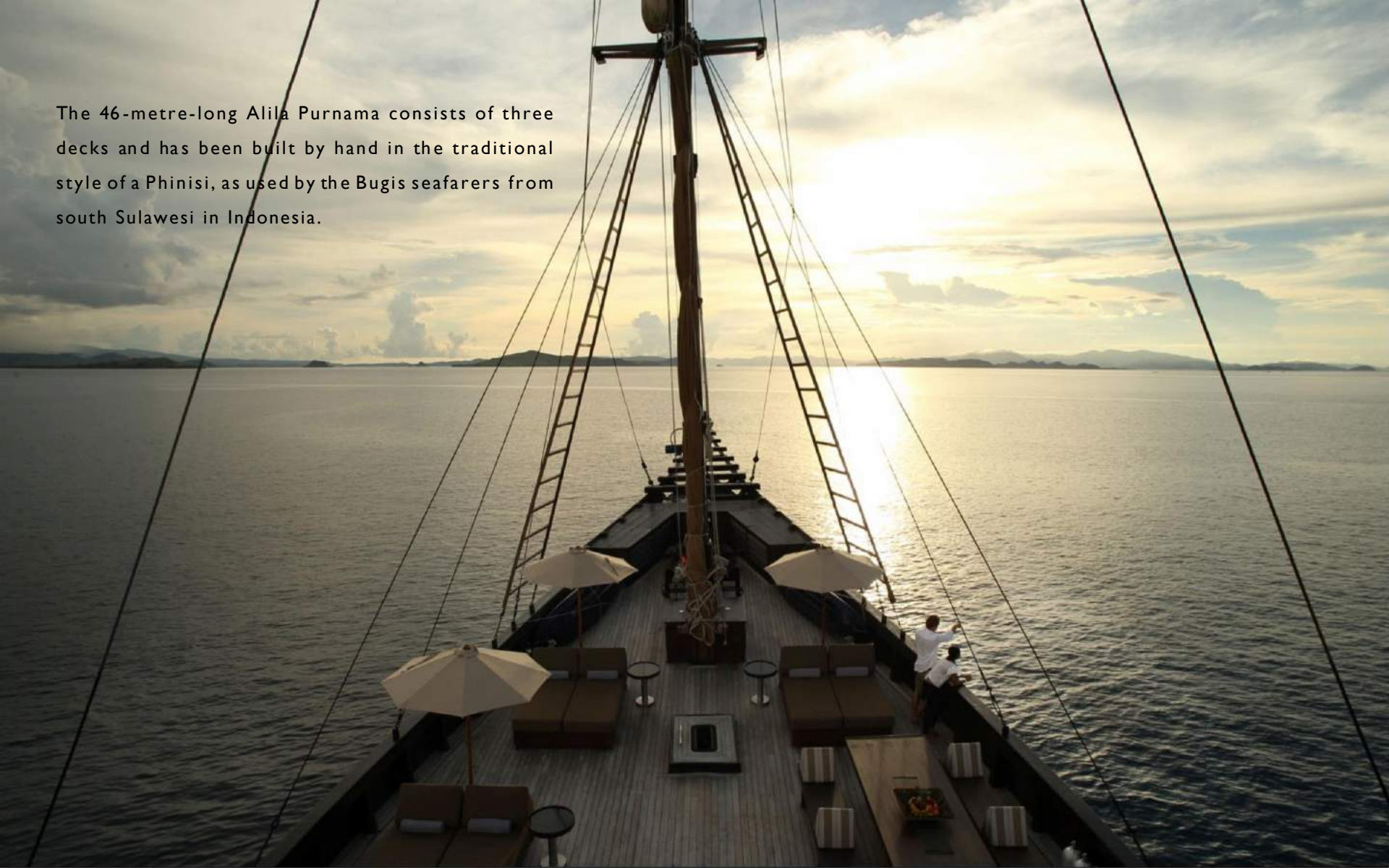


# ALILA PURNAMA

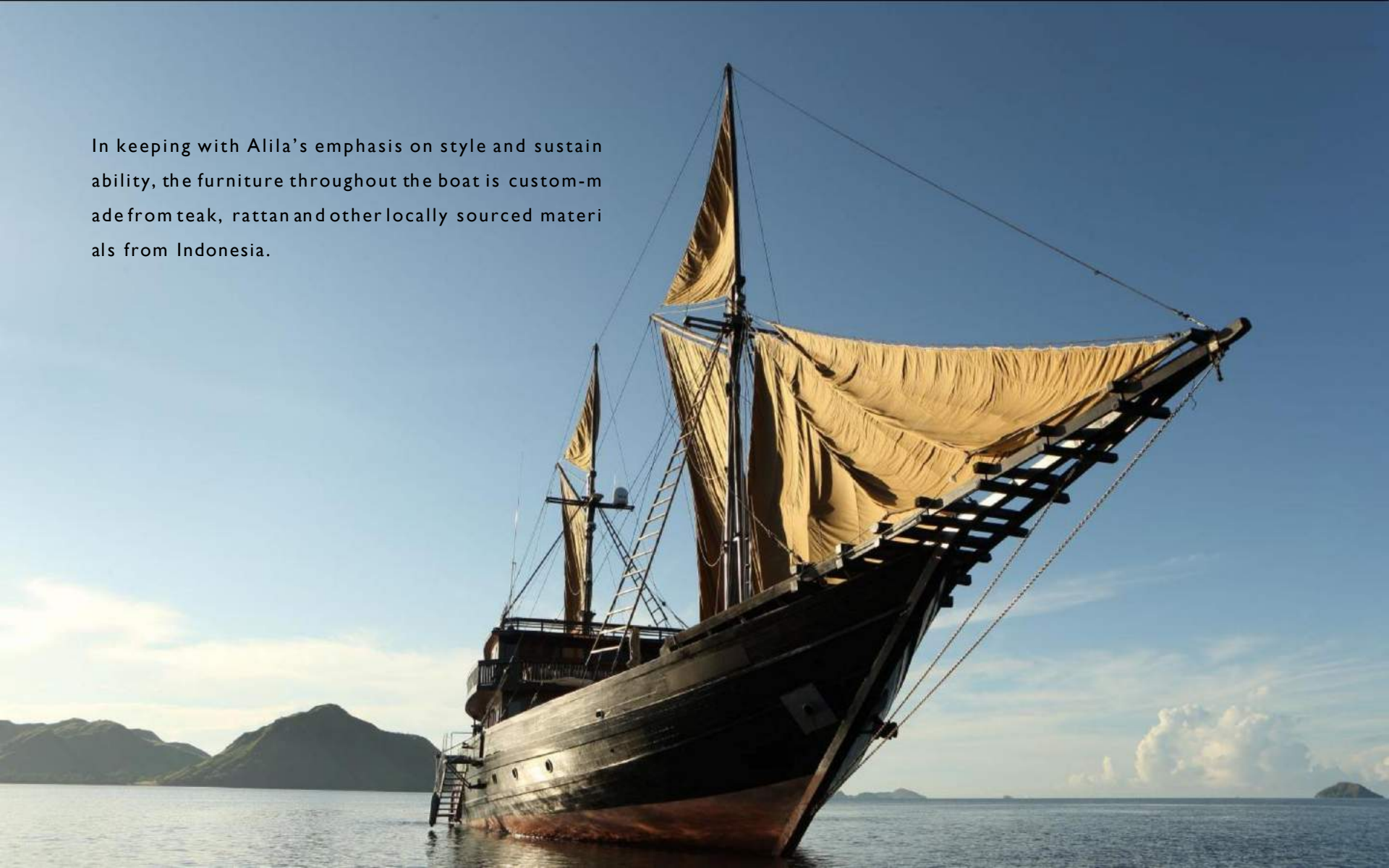
Fascinating Sea Voyages ...



The 46-metre-long Alila Purnama consists of three decks and has been built by hand in the traditional style of a Phinisi, as used by the Bugis seafarers from south Sulawesi in Indonesia.



In keeping with Alila's emphasis on style and sustainability, the furniture throughout the boat is custom-made from teak, rattan and other locally sourced materials from Indonesia.



## TECHNICAL SPECIFICATIONS

Length	46 metres
Beam	10 metres
Height	4 metres
Engine	650 hp MAN single engine
Speed	10 knots



Sriwijaya – Master Suite





## ACCOMMODATION

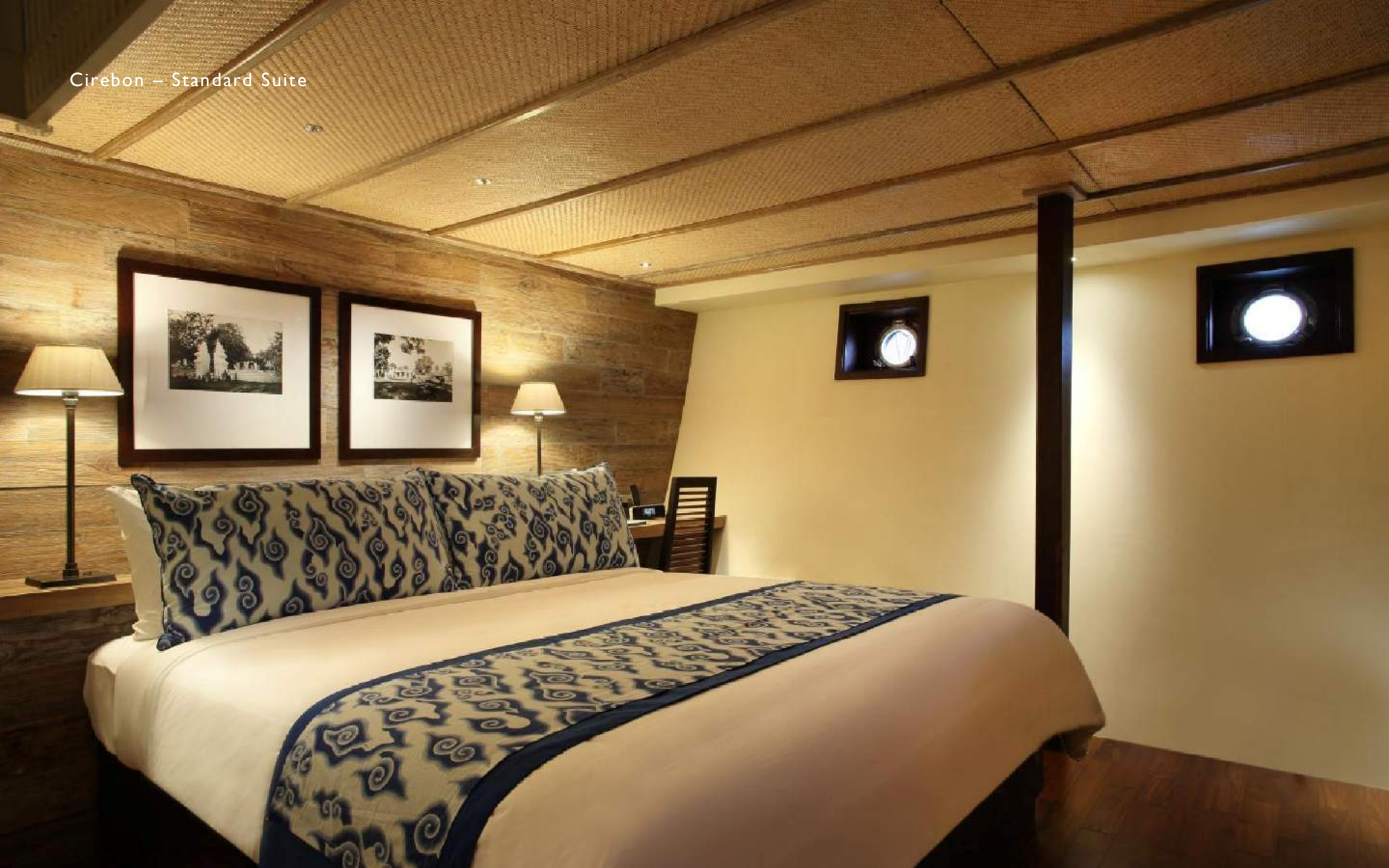
Five well-appointed suites, all air-conditioned with queen-size beds, en-suite bathrooms with shower, separate toilet, double wardrobes and writing desk.

Master suite, expansively designed with large, wraparound windows offering 180-degree views of the ever-changing landscape.

Its bathroom features shower, bathtub, two washbasins and an enclosed separate toilet, while a private balcony and large sundeck with daybed and deck chairs provide the ultimate space for relaxation.



Cirebon – Standard Suite



Bali – Standard Suite





Madura – Standard Suite



Jawa – Standard Suite





## FACILITIES

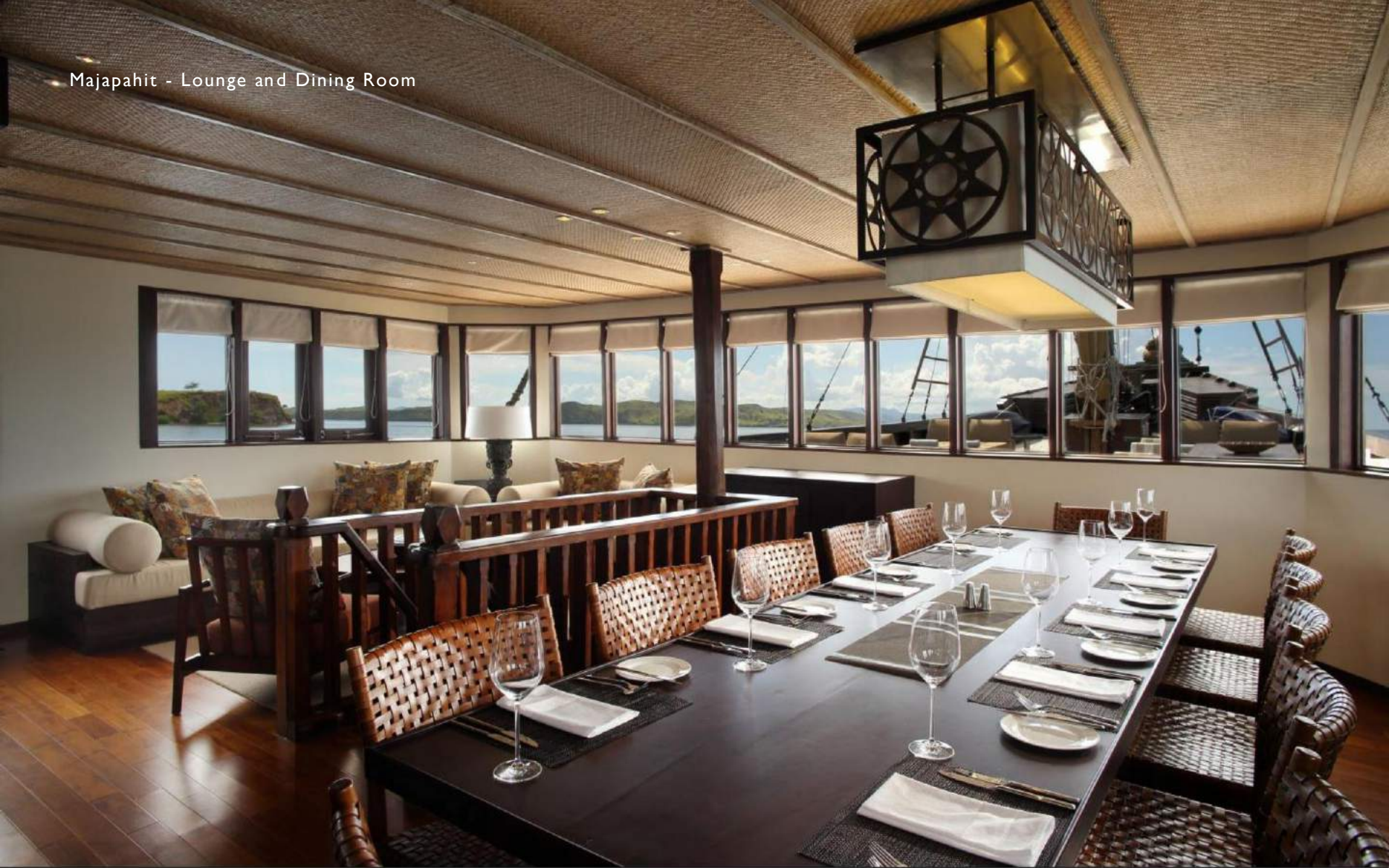
A library, lounge, bar, indoor dining area seating up to 10 persons and plenty of space outside to unwind and enjoy the views. It is also equipped with complimentary WiFi\* access, enabling guests to upload their trip photos on a daily basis.

Guests will be able to dine at leisure in the air-conditioned dining room or on the outdoor deck. Meals and an extensive list of non-alcoholic beverages are all-inclusive while alcoholic beverages including wines, beers and cocktails are available for an additional charge.

The main outdoor deck has large oversized daybeds shaded by umbrellas – perfect for relaxing day or night and enjoying the fresh sea breezes. And with a spa therapist aboard the vessel, guests can succumb to the soothing pleasures of a signature Alil a massage onboard or on a nearby beach.

\*The WiFi connection is subject to availability, depending on the satellite connectivity and technical condition.

Majapahit - Lounge and Dining Room



Ternate - Library



An aerial photograph of a tropical bay with crystal-clear turquoise water. In the foreground, two people are swimming on their stomachs. In the middle ground, a small motorboat is moving across the water, leaving a white wake. The background features lush green islands and mountains under a blue sky with scattered clouds.

## ACTIVITIES

Alila Purnama also has its own fully licensed PADI dive centre, catering to qualified divers. Development courses offered onboard range from Advanced Open Water Diver to over 16 specialties, including Enriched Air Nitrox, Deep, Peak Performance Buoyancy, Drift and Underwater Naturalist.

There is plenty of equipment for all guests onboard as well as a dedicated freshwater rinse tank for camera equipment. For those with a taste for adventure, yoga, kayaking, snorkeling, visiting local islands and pearl farms, picnic lunch or BBQ dinner by the beach are among the many other pursuits on offer.



## KOMODO ISLAND

Diving Season & Information	June till October
Depth of diving	5 - > 40 m
Visibility	5 - 30 m
Currents	Can be strong - up to 8 knots
Surface Conditions	Mild to rough in some places
Water Temperature	20 - 29° C
Experience Level	Beginner to advanced
Number of dive sites	>35

Komodo National Park is located in the center of the Indonesian archipelago between the islands of Sumbawa and Flores. The World Heritage site is blessed with secluded beaches, amazing coral reefs and crystal clear water. The area has over 260 coral species and more than 1,000 species of fish, marine reptiles, dolphins, manta rays, turtles, whales and dugongs. Komodo is considered one of the best dive sites in the world - diving or snorkeling in this area will truly leave you with extraordinary experiences.

Within the national park contains hundreds of unique species such as, wild boars, water buffalos, deer's, monkeys and the famous Komodo Dragons. The Komodo Dragon is the largest land-dwelling reptile in the world (the largest found was 3.13 meters long and weighted 166 KG. Their footprints are often seen along pink sandy beaches, or while hiking in the hills with knowledgeable park rangers. They can live up to 50 years and grow to over 100 kg in weight and almost 3m from head to tail tip. To raise their body temperature they bask in the sunlight during the day and then they burrow into the ground at night.. They stalk, ambush and devour wild deer, pigs, buffalo and even horses for sustenance.

Approximately a third of the park is taken up by the islands of Komodo, Rinca, Gili Mota, Nusa Kode and Padar, while the rest is marine territory consisting of coral reefs, sea grass beds, mangrove, and semi-enclosed bays. The 1,817 km<sup>2</sup> Komodo National Park established in 1980 was listed by UNESCO as a World Heritage Site in 1986 and lies in the famous Coral Triangle - the global heart of marine bio-diversity.



## RAJA AMPAT

Depth	5 - > 40m
Visibility	10 - 30 m
Currents	Can be strong
Surface Conditions	Calm
Water Temperature	27 - 30°C
Experience Level	Intermediate - advanced
Number of dive sites	Unknown but >200

Raja Ampat translated means “four kings”, referring to the islands Salawati, Batanta, Waigeo and Misool. These are in turn surrounded by a myriad of amazing, untouched smaller isles with picture postcard beaches and sheer, ragged limestone cliffs. The Baliem Valley, running through Irian Jaya’s string of jutting mountain peaks, is home to the gentle warrior tribes of the highlands, the Dani. This region on the north-western tip of New Guinea comprises about 1500 islands spread over 50,000 sq km of spectacular scenery. It is here where the remote islands of Misool, Wayag and Penemu are located.



70% of the world’s total number of coral species is said to be found in the amazing underwater world of Raja Ampat. This area has one of the greatest and healthiest coral reefs for its size in the world with nearly 1,200 species of fish and 550 species of coral. Discover the most beautiful soft coral jungle in the world. Raja Ampat, is home to the world’s most bio-diverse marine region, an underwater Shangri-la for diving enthusiasts and marine biologists.



Above the water, kayak in secret bays enclosed by jagged limestone pinnacles covered with orchids and tropical vegetation. The Alila excursion combines well a visit to the Dani people of the Grand Baliem Valley of Papua Guinea.



The somewhat more inaccessible southern coastal region of Irian Jaya is home to the equally fascinating Asmat tribe. The easily reachable northern and western coasts of Irian Jaya have a well developed infrastructure. Apart from its great reefs and gleaming white beaches Biak Island offers a fine collection of war relics. Jayapura is the provincial capital with nearby Yotefa Bay harboring a spectacle of half sunken WWII ships, beached tanks and landing craft.





## CENDRAWASIH BAY

Depth of diving	5 - > 40 m
Visibility	10 - 30 m
Currents	Can be strong
Surface Conditions	Calm
Water Temperature	27 - 30° C
Experience Level	Beginner - advanced
Number of dive sites	>200

Cenderawasih Bay (Indonesian: Teluk Cenderawasih) means 'Bird of Paradise Bay'. Stretching over 14,535 km<sup>2</sup>, Cenderawasih Bay is the largest marine national park in Southeast Asia and includes coastal and mangrove ecosystems, coral reefs, lush tropical islands and pristine sand atolls. The park is home to a huge variety of land and marine life, among them the Bird of Paradise, Green, Hawksbill, Leatherback and Olive Ridley Turtles, mammals such as dugongs, dolphins and blue whales, and over 955 species of fish, including whale sharks. Cenderawasih Bay boasts all variations of coral reef; fringing reef, barrier reef, atoll, patch reef, and shallow water reef mounds, which makes this the most abundant and one of the last few remaining pristine reefs in the world. Until recently, the bay was geologically isolated from the flow of the Pacific tides; this isolation has somewhat consecrated Cenderawasih with a wide variety of endemic species.

Prepare to sail through some of the most breathtaking and extraordinary scenery in luxury and comfort, experiencing the majestic and curious whale sharks who inhabit the waters close to the local 'bagans', small fishing platforms in the bay that are tended to by local fishermen. At dusk, the fishing platforms are lowered to a depth of about 60 feet and floodlit, illuminating the water to attract the ikan puri, a small baitfish. At sunrise, the fishermen pull up the bagans, which teem with over a tonne of catch, creating a feeding frenzy for both big and small fish and attracting plankton for the whale sharks. Guests will also have the opportunity to dive among relics from the WW2 Battle of Biak between US forces and the Japanese occupying the bay, leaving scattered fighter jets, ships, rescue planes and other hidden treasures yet to be found.





## PRIVATE CHARTERS

Private Charters are available for four nights upwards for year round sailing tailored to guests' preferred itineraries and sailing duration subject to availability.

### ALILAPURNAMA FULL CHARTER

Komodo Island :

July – September USD 12,500 ++ per night

Raja Ampat :

November – March USD 15,000 ++ per night

Cendrawasih Bay:

May – June USD 15,000 ++ per night

Alor/ Ambon/ Banda Spice Islands: October

June – October USD 12,500 ++ per night

### Package inclusions:

Exclusive liveaboard arrangements for 10 persons, with all land transfers, scheduled excursions and meals, refreshments and non-alcoholic beverages, unlimited dives, activities such as snorkeling, shore excursions and island hopping, all equipment and admissions fees to the National Parks and permits for 10 persons. Well looked after by a crew of 16, including the cruise director and dive instructor, both of whom are PADI-certified, resident chef and spa therapist.



## LIMITED EDITION FOR SUITE BOOKINGS

### KOMODO ISLAND / RAJA AMPAT EXPEDITION/ CENDRAWASIH BAY

Rates are inclusive of for two persons sharing a suite

FROM USD 2,415 ++ for Standard Suite

FROM USD 2,835 ++ for Sriwijaya Master Suite

Please view our website : <http://www.alilahotels.com/purnama/rates>  
or contact our team on the availability.

#### Package inclusions :

- Exclusive and luxury liveaboard arrangements for two persons in a suite.
- All land transfers and scheduled excursions for two persons.
- Meals, refreshments and non-alcoholic beverages for two persons.
- Unlimited dives, activities such as snorkeling, shore excursions and island hopping for two persons.
- All equipment and admissions fees to the National Parks and permits for two persons.
- Well looked after by a crew of 16, including the cruise director and dive instructor, both of whom are PADI-certified, resident chef and spa therapist.



## ALILA PURNAMA

### Terms and Conditions:

- Rates are subject to 11,2% government tax and service charge.
- Package excludes international and domestic airfare, excess baggage fees, passport, visas or airport tax fees (both international and domestic), alcoholic beverages, spa treatments, any unscheduled excursions outside of the sailing itinerary and medical insurance. Please note that additional charges will apply for any special food requests that incur charges relating to the source location or transport of such items into Indonesia for example: Kosher or Halal meat or specialty products.
- All reservations are subject to the sailing calendar and cabin availability onboard Alila Purnama at the time of reservation, subject to demand (departure will only be confirmed when minimum 3 cabins occupied).

Rates for private charters, tailor-made itineraries and sailing duration are welcome and available on request. For

for further information and reservations:

Phone +62 361 236 384    Fax +6 2 36 1 26 5 390    Email : [purnama@alilahotels.com](mailto:purnama@alilahotels.com)

